

1. A periodic triangular voltage $v_s(t)$ as shown in Figure 1 is directly applied to a 25Ω resistor. Please determine the root-mean-square (rms) value of the periodic triangular voltage and the power consumption of the resistor. [15]
2. Please design a difference amplifier, which can magnify the voltage differences between ANY two points in a circuit, by using one ideal op-amp and four resistors. Your designed difference amplifier should be able to convert the input voltage $-150\text{mV}\sim 150\text{mV}$ into $-5\text{V}\sim 5\text{V}$ at the output terminal. You have to describe your design procedure and explain how to determine the values for the four resistors. [15]
3. As shown in Figure. 2, please use node analysis method to determine the voltage \bar{V}_1 and \bar{V}_2 as well as the average power supplied by the 12V voltage source. [20]
4. Please draw the asymptotic Bode plot (both amplitude gain and phase) for the following transfer function: $H(s) = \frac{-600s}{(s+200)^2}$. Also, determine its maximum amplitude gain in dB. [20]
5. For the circuit shown in Figure 3, please find the output voltage $v_o(t)$ for $t \geq 0$ with the input voltage $v_s(t) = 10\text{V}$ for $t < 0$ and $v_s(t) = -5\text{V}$ for $t \geq 0$. [20]
6. As shown in Figure 4, the ideal two-way switch SW is switching periodically with a very high frequency between point A and point B assuming zero switching transient time. If the time for the SW connecting to point B is twice the time for the SW connecting to point A and the inductance and capacitance values are very large, please determine the output voltage in steady state. [10]

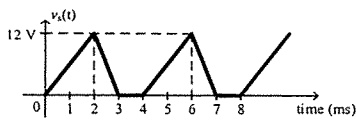


Figure 1

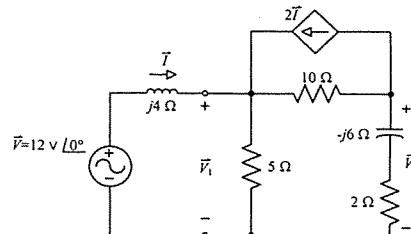


Figure 2

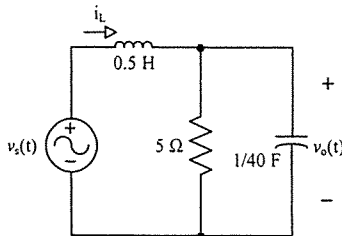


Figure 3

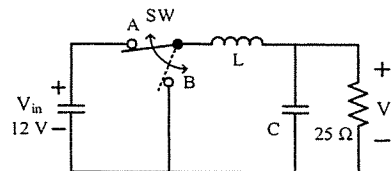


Figure 4

試題隨卷繳回