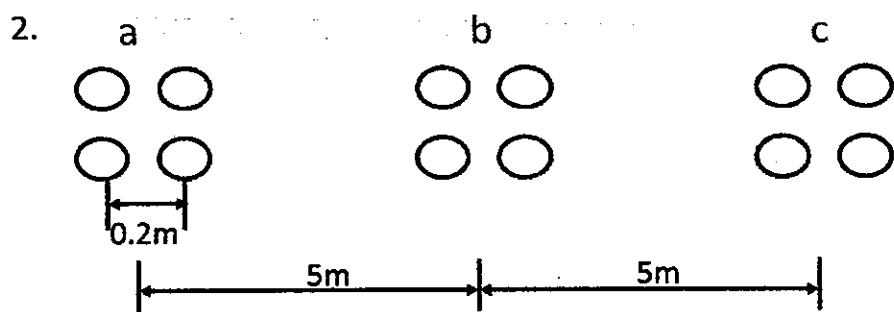
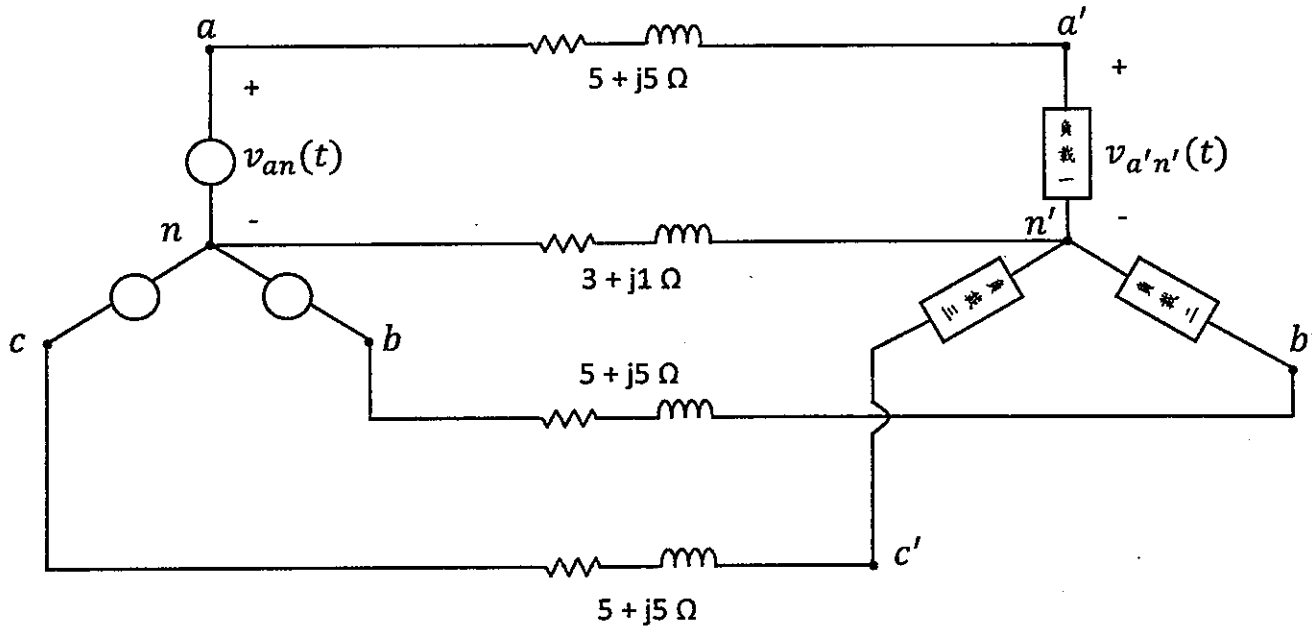


1. 下圖所示為一三相平衡正序電力系統。假設負載一所消耗之複功率(COMPLEX POWER)為 $1.76 + j1.32$ MVA, $V_{a'n'}(t) = 12700\sqrt{2} \cos 377t$ (伏)。試求 $V_{an}(t)$ 及 $V_{ab}(t)$ 。(12%)



2. 左圖所示為一 60Hz, 345KV, 三相平衡且完全换位(COMPLETELY TRANSPOSED)之輸電線, 每根導線之半徑為 1.5cm。試求每公尺輸電線之每相電感。(10%)

3. 有一單相變壓器, 高壓側繞組之匝數為 1000 匝, 電阻 $R_1 = 1\Omega$, 漏電抗 $X_1 = 2\Omega$ 。

低壓側繞組之匝數為 100 匝, 電阻 $R_2 = 0.01\Omega$, 漏電抗 $X_2 = 0.02\Omega$ 。激磁電流可忽略不計。

- (a) 選定高壓側之基準值為 10KVA, 1000V, 試計算各阻抗之標么值, 並標示於等效電路上。(6%)
 (b) 當低壓側電壓為 100V, 所接負載為 8KW, 功因為 0.8 落後時, 試求高壓側電壓之標么值。(5%)

4. The rotor of a four-pole synchronous generator is rotating at a mechanical speed of 1800 r/min
 (a) What is the frequency of the generated voltage in hertz and in radians per second? (10%)
 (b) What mechanical speed in revolutions per minute would be required to generate voltage at a frequency of 50 Hz? (7%)

5. The nameplate on a 450-V 55 HP(Horse Power) 60 Hz four-pole induction motor indicates that its speed at rated load is 1760 r/min. Assume the motor to be operating at rated load.
 (a) What is the slip of the rotor? (10%)
 (b) What is the frequency of the rotor currents? (7%)

6. A boost (step-up) converter has the following specifications: input voltage $V_{in} = 12$ V, output voltage $V_{out} = 50$ V, output rated power $P_{out} = 120$ W, and switching frequency $f_{sw} = 100$ kHz. The converter is operated at steady-state continuous conduction mode under full load condition.
- (a) Determine the duty ratio. [5]
 - (b) Determine the minimum output capacitance so the output voltage ripple ΔV_{out} (peak-to-peak) is 1% of the V_{out} . [5]
 - (c) Determine the maximum input current if the inductor is $400\mu\text{H}$. [5]
 - (d) Explain whether the converter is operated in discontinuous mode or not when the output power $P_{out} = 25$ W. [5]
7. (a) Please draw the circuit diagram of the flyback converter with a "RCD snubber" to mitigate the voltage spike caused by the leakage inductor of the transformer. [5]
- (b) Explain the operation principle of the RCD snubber [5] and the design guide line for selecting the values for C. [3]

試題隨卷繳回